

# SOCIAL WELFARE DEPARTMENT

KARNATAKA STATE COMMISSION FOR SAFAI  
KARMACHARIS  
HON, BLE SECRETARY TO GOVERNMENT

**PLACE: VIKASA SOUDHA  
BENGALURU**

**DATE: 02.03.2022**

**TIME :3.00 PM**

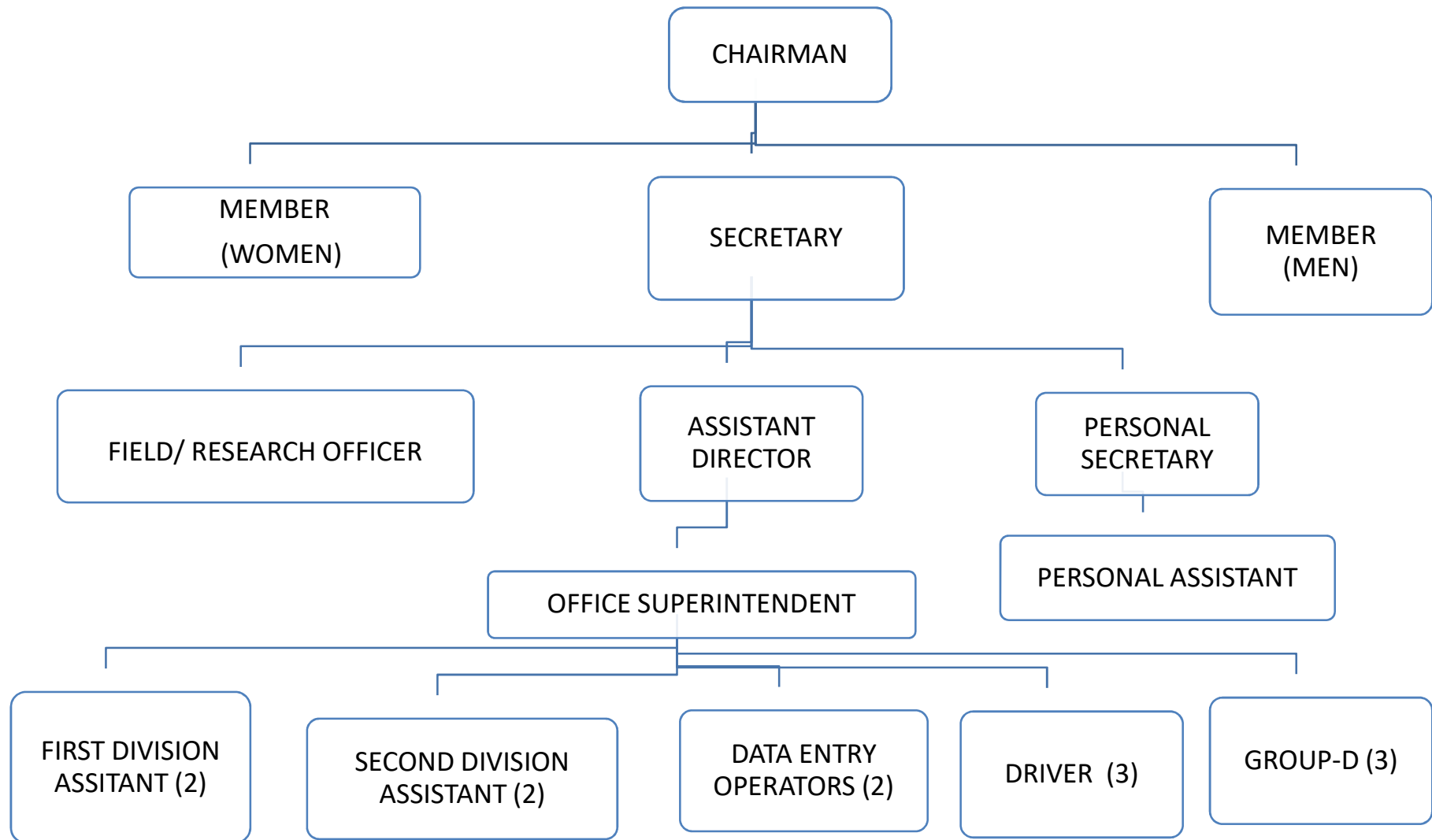


## DUTIES AND RESPONSIBILITIES OF KARNATAKA STATE SAFAI KARMACHARIS COMMISSION

- Karnataka State Safai Karmacharis Commission has been constituted as per the Notification No:Samvyashai 50 Legislation 2012 Dated:04-01-2013.
- **Safai Karmacharis** are individuals who are hired on a permanent or contract basis by urban local bodies, governmental and private institutions, to carry out sweeping of roads, sanitation and hygiene work. Basically, Safai Karmacharis are not Manual Scavengers.
- **Manual Scavengers** are individuals who are physically engaged in the cleaning of open sewage pits, potholes and cleaning of railway tracks before the complete degradation of the human excreta.

- To recommend to the State Government specific programs to be undertaken in order to eradicate the disparity in the status, facilities and opportunities provided to Safai Karmacharis under the Action Plan with the time limit:
- To study and evaluate the programs and implementations related to the social and economic rehabilitation of Safai Karmacharis, and to study and evaluate the implementation of such programs and projects and to recommend to the State Government on the coordination and implementation of such programs and projects.
- The Commission has the authority of the civil court and is functioning on the pattern of the civil court. The Commission has quasi judicial powers with 1-Chairman, 2-Members (1 Female + 1 Male) who are nominated by the Government.
- Programs or projects related to any category of safai karmacharis.
- Conclusions, Guidelines or Instructions aimed to ease the difficulties of safai karmacharis.
- Measures for the social and economic prosperity of safai karmacharis.
- Submit periodic reports to the State Government on any issue relating to Safai Karmacharis, considering the difficulties and shortcomings of the Safai Karmacharis.

## Organizational Structure of the State Level Safai Karmacharis Commission;



**BUDGET ALLOCATION FOR KARNATAKA STATE COMMISSION FOR SAFAI  
KARMACHARIS.**

<b><u>SL.NO</u></b>	<b><u>YEAR</u></b>	<b><u>BUDGET ALLOCATION</u></b>	<b><u>RELEASED</u></b>	<b><u>EXPN</u></b>
1	2019-20	225.00	225.00	207.56 (17.44 Salary )
2	2020-21	196.08	196.08	168.32 (27.76 Salary )
3	2021-22	260.00	260.00	238.86 (28.02.2022)

**Details of Deaths while cleaning Manhole/Septic Tank since 1993 to 2021-22**

<b>SL.NO</b>	<b>YEAR</b>	<b>No.of Deaths</b>
1	1993-94	-
2	1994-95	-
3	1995-96	1
4	1998-99	3
5	2001-02	1
6	2007-08	2
7	2008-09	7
8	2009-10	3
9	2010-11	2
10	2011-12	7
11	2012-13	7
12	2013-14	7
13	2015-16	13
14	2016-17	9
15	2017-18	6
16	2018-19	4
17	2019-20	8
18	2020-21	5
19	2021-22	5
	<b>Total</b>	<b>90</b>

**ACTION PLAN OF KARNATAKA STATE COMMISSION FOR SAFAI  
KARMACHARIS FOR THE YEAR 2021-22**

<b>SL. NO.</b>	<b>PROGRAMME</b>	<b>Budgeted Amount</b>
1	Honorarium and other Allowances of Chairman and Members	10.00
2	Officer and Staff Pay and other allowances	60.00
3	Maintenance of the Commission and other expenditure	122.62
4	Implementation of M.S.Act 2013, Organizing of awareness workshops for Safai Karmacharis in the Districts	67.38
	<b>Total</b>	<b>260.00</b>

## Initiatives of the Commission

- The state government has conducted a survey in 12 districts from 2013 to date and identified 5,080 manual scavengers.
- The survey of the remaining 18 districts for manual scavengers is scheduled to begin in November, 2021 and end in February, 2022.
- Research Study of the dependent families of the death families by Institute for Social and Economic Change (ISEC) under Progress.
- Research Study has been conducted by National Law School of India University, Bengaluru, regarding Life style, Education, Social status, Economic Condition and Political Status of the Manual scavengers.
- Calendars printed and distributed containing message regarding the effective implementation of The Prohibition of Employment as Manual Scavengers and their Rehabilitation Act 2013 and facilities provided by the different departments to manual scavengers.
- Broadcasting of MS Act-2013, through Radio jingles.
- Expert Committee to study the safety measures and protective gears for comfortable usage by the safai karmacharis.



- Research Study has been conducted by National Law School of India University, Bengaluru, regarding Life style, Education, Social status, Economic Condition and Political Status of the Manual scavengers.
- Calendars printed and distributed containing message regarding the effective implementation of The Prohibition of Employment as Manual Scavengers and their Rehabilitation Act 2013 and facilities provided by the different departments to manual scavengers.
- Broadcasting of MS Act-2013, through Radio jingles
- Expert Committee to study the safety measures and protective gears for comfortable usage by the safai karmacharis.
- Survey of the safai karmacharis working at Government and Non-Government organizations is under process.

# THANK YOU

ಮ್ಯಾನ್ಯುಯಲ್ ಸ್ಟ್ಯಾವೆಂಜಿಂಗ್ ಮುಕ್ತ ಕರ್ನಾಟಕ ನಿರ್ಮಿಸೋಣ